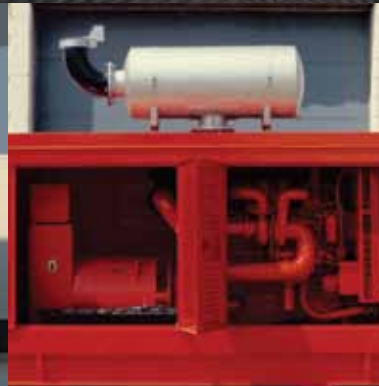




**UNIVERSAL**  
*Acoustic & Emission Technologies*



## QuietShield™ Engine Silencers

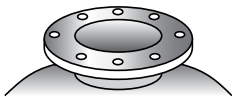
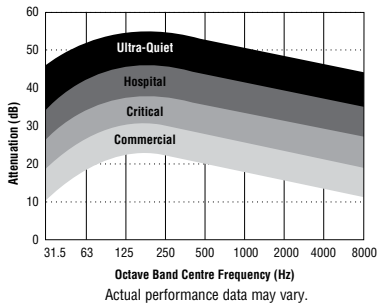
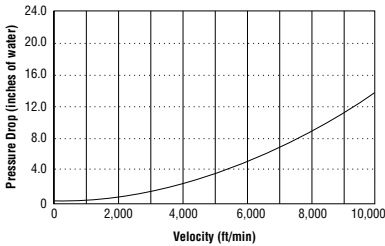
20–25% Smaller Size

50% Reduced Engine Backpressure

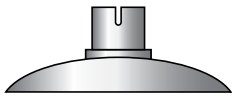
35% Better Acoustic Performance

QuietShield silencers are designed for engine and compressor applications that require high quality, durable sound attenuation. The silencers have a high-performance internal design that delivers superior sound reduction in a smaller size when compared to a conventional silencer.

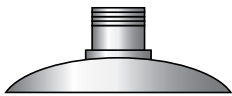
# Cylindrical Silencers



**“125/150# ANSI” Mounting Flange:**  
Bore sizes 4” and above.



**“C” Slotted Clamped Tubes:**  
Bore sizes < 4”.



**“P” Pipe Ends:**  
Bore sizes < 4”.

	Commercial	Critical	Hospital	Ultra-Quiet
<b>Attenuation Level</b>	15–25 dB(A)	25–35 dB(A)	35–42 dB(A)	42–50 dB(A)
<b>Orientation</b>	Horizontal or Vertical	Horizontal or Vertical	Horizontal or Vertical	Horizontal or Vertical
<b>Standard Clamped or NPT</b>	2 in–3.5 in bore, slotted tube or NPT	2 in–3.5 in bore, slotted tube or NPT	2 in–3.5 in bore, slotted tube or NPT	2 in–3.5 in bore, slotted tube or NPT
<b>Standard Plate Flange</b>	4 in–22 in bore, drilled to 125/150# ANSI standard	4 in–22 in bore, drilled to 125/150# ANSI standard	4 in–22 in bore, drilled to 125/150# ANSI standard	4 in–22 in bore, drilled to 125/150# ANSI standard
<b>Optional Flanges</b>	BS10, JIS, DIN and others	BS10, JIS, DIN and others	BS10, JIS, DIN and others	BS10, JIS, DIN and others
<b>Finish</b>	Silver high heat paint; optional black high heat paint	Silver high heat paint; optional black high heat paint	Silver high heat paint; optional black high heat paint	Silver high heat paint; optional black high heat paint
<b>Standard Material</b>	Mild steel – max temp 1,000°F	Mild steel – max temp 1,000°F	Mild steel – max temp 1,000°F	Mild steel – max temp 1,000°F
<b>Optional Material</b>	< 20 inch O.D., Aluminized steel Stainless steel grades 304L, 316 & 409 – max temp 1,500°F	< 20 inch O.D., Aluminized steel Stainless steel grades 304L, 316 & 409 – max temp 1,500°F	< 20 inch O.D., Aluminized steel Stainless steel grades 304L, 316 & 409 – max temp 1,500°F	< 20 inch O.D., Aluminized steel Stainless steel grades 304L, 316 & 409 – max temp 1,500°F
<b>Configuration Types</b>	Type 1 and 3	Type 1, 2 and 3	Type 1, 2 and 3	Type 1 and 3
<b>Standard Low Skin Temperature</b>	N/A	Type 2 Configurations 250°F Max.	Type 2 Configurations 250°F Max.	All Configurations 250°F Max.
<b>Optional Assemblies</b>	<ul style="list-style-type: none"> <li>• Rain Caps</li> <li>• Wye Connections</li> <li>• Flex Connectors</li> <li>• Expanders/Reducers</li> <li>• Elbows</li> <li>• Straight Tube</li> <li>• Exhaust Pipe</li> <li>• Attachment Brackets</li> <li>• Nut, Bolt &amp; Gasket Kits</li> <li>• Gaskets</li> <li>• Reduction Flanges</li> <li>• Companion Flange Kits</li> <li>• Insulation Blankets</li> </ul>	<ul style="list-style-type: none"> <li>• Rain Caps</li> <li>• Wye Connections</li> <li>• Flex Connectors</li> <li>• Expanders/Reducers</li> <li>• Elbows</li> <li>• Straight Tube</li> <li>• Exhaust Pipe</li> <li>• Attachment Brackets</li> <li>• Nut, Bolt &amp; Gasket Kits</li> <li>• Gaskets</li> <li>• Reduction Flanges</li> <li>• Companion Flange Kits</li> <li>• Insulation Blankets</li> </ul>	<ul style="list-style-type: none"> <li>• Rain Caps</li> <li>• Wye Connections</li> <li>• Flex Connectors</li> <li>• Expanders/Reducers</li> <li>• Elbows</li> <li>• Straight Tube</li> <li>• Exhaust Pipe</li> <li>• Attachment Brackets</li> <li>• Nut, Bolt &amp; Gasket Kits</li> <li>• Gaskets</li> <li>• Reduction Flanges</li> <li>• Companion Flange Kits</li> <li>• Insulation Blankets</li> </ul>	<ul style="list-style-type: none"> <li>• Rain Caps</li> <li>• Wye Connections</li> <li>• Flex Connectors</li> <li>• Expanders/Reducers</li> <li>• Elbows</li> <li>• Straight Tube</li> <li>• Exhaust Pipe</li> <li>• Attachment Brackets</li> <li>• Nut, Bolt &amp; Gasket Kits</li> <li>• Gaskets</li> <li>• Reduction Flanges</li> <li>• Companion Flange Kits</li> <li>• Insulation Blankets</li> </ul>

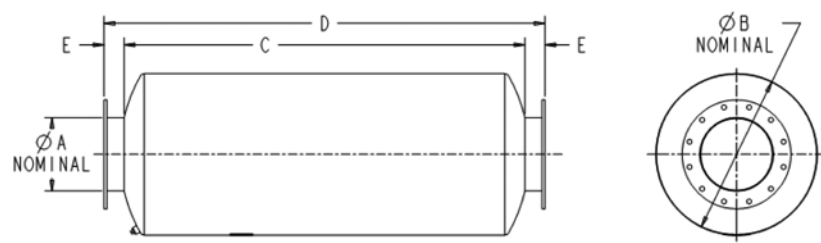
•• All dimensions are in inches unless otherwise stated. All weights are in lbs and are approximate.

•• All information correct at time of printing. Universal has a policy of continuous improvement. Therefore we reserve the right to change the specifications of these silencers without notice.

# Type 1 Configuration

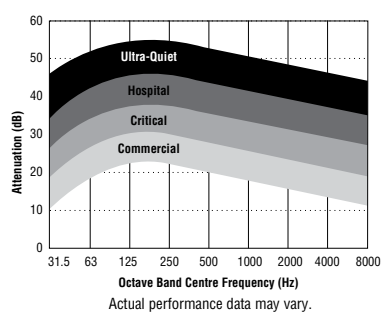
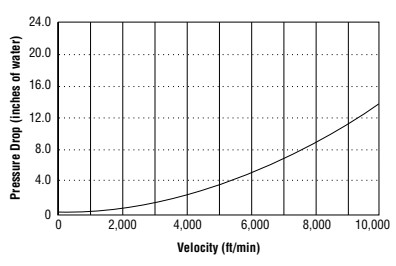
## End-In End-Out

Commercial Grade (15–25 dB)



∴ 2"–3.5" connections have slotted tubes or threaded pipes.

A Inlet Size	Connection Type	Part Number	B Silencer Diameter	C Body Length	D Overall Length	E Inlet/Outlet Length	F Inlet Offset	Weight
2	Slotted	61202C	5	12.5	16.5	2	N/A	7
2	NPT	61202P	5	12.5	16.5	2	N/A	8
2.5	Slotted	61225C	6	15	21	3	N/A	11
2.5	NPT	61225P	6	15	21	3	N/A	12
3	Slotted	61203C	8	20	26	3	N/A	18
3	NPT	61203P	8	20	26	3	N/A	20
3.5	Slotted	61235C	8	20	26	3	N/A	23
3.5	NPT	61235P	8	20	26	3	N/A	25
4	Flange	61204F	10	25	31	3	N/A	40
5	Flange	61205F	12	30	38	4	N/A	55
6	Flange	61206F	14	35	43	4	N/A	75
8	Flange	61208F	18	45	53	4	N/A	130
10	Flange	61210F	22	55	63	4	N/A	235
12	Flange	61212F	26	65	73	4	N/A	320
14	Flange	61214F	30	75	83	4	N/A	430
16	Flange	61216F	36	90	98	4	N/A	670
18	Flange	61218F	42	105	113	4	N/A	970
20	Flange	61220F	42	105	113	4	N/A	990
22	Flange	61222F	48	120	128	4	N/A	1310



∴ All dimensions are in inches unless otherwise stated.  
All weights are in lbs and are approximate.

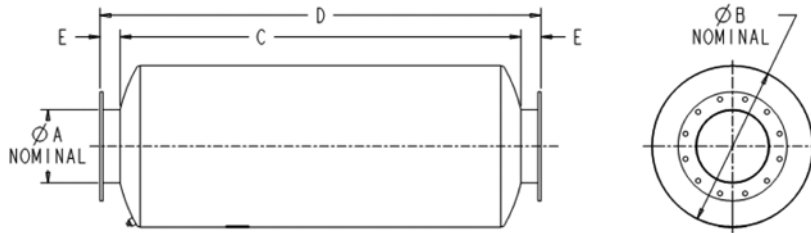
∴ All information correct at time of printing. Universal has a policy of continuous improvement. Therefore we reserve the right to change the specifications of these silencers without notice.

**Need something similar with slight modifications?**  
Mark up the outline drawing above and fax to (608) 873-7298 or scan and email to [info@universalAET.com](mailto:info@universalAET.com)

# Type 1 Configuration

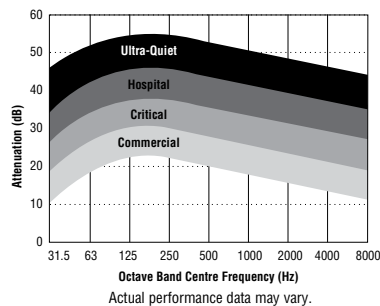
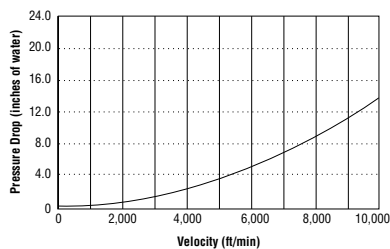
## End-In End-Out

Critical Grade (25–35dB)



∴ 2"–3.5" connections have slotted tubes or threaded pipes.

A Inlet Size	Connection Type	Part Number	B Silencer Diameter	C Body Length	D Overall Length	E Inlet/Outlet Length	F Inlet Offset	Weight
2	Slotted	61302C	8	24	28	2	N/A	24
2	NPT	61302P	8	24	28	2	N/A	25
2.5	Slotted	61325C	8	24	30	3	N/A	24
2.5	NPT	61325P	8	24	30	3	N/A	25
3	Slotted	61303C	10	30	36	3	N/A	39
3	NPT	61303P	10	30	36	3	N/A	40
3.5	Slotted	61335C	10	30	36	3	N/A	39
3.5	NPT	61335P	10	30	36	3	N/A	40
4	Flange	61304F	12	36	42	3	N/A	70
5	Flange	61305F	14	42	50	4	N/A	95
6	Flange	61306F	16	48	56	4	N/A	140
8	Flange	61308F	20	60	68	4	N/A	205
10	Flange	61310F	24	72	80	4	N/A	365
12	Flange	61312F	30	90	98	4	N/A	555
14	Flange	61314F	36	108	116	4	N/A	950
16	Flange	61316F	42	126	134	4	N/A	1280
18	Flange	61318F	42	126	134	4	N/A	1340
20	Flange	61320F	48	144	152	4	N/A	1675
22	Flange	61322F	54	162	170	4	N/A	2080



∴ All dimensions are in inches unless otherwise stated.  
All weights are in lbs and are approximate.

∴ All information correct at time of printing. Universal has a policy of continuous improvement. Therefore we reserve the right to change the specifications of these silencers without notice.

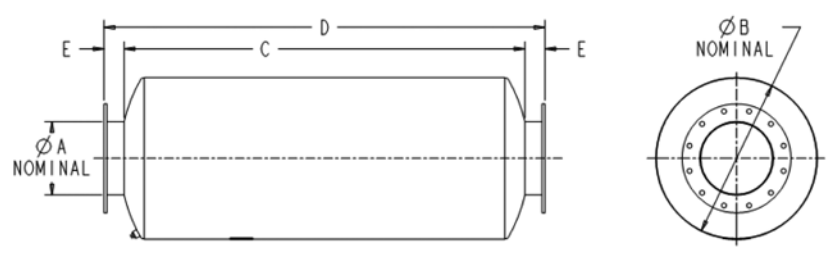
**Need something similar with slight modifications?**

Mark up the outline drawing above and fax to (608) 873-7298  
or scan and email to [info@universalAET.com](mailto:info@universalAET.com)

# Type 1 Configuration

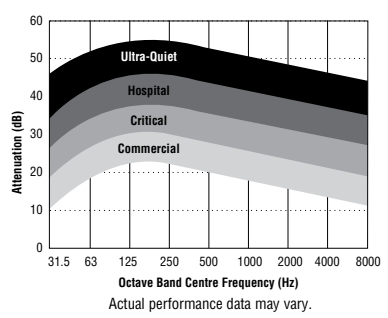
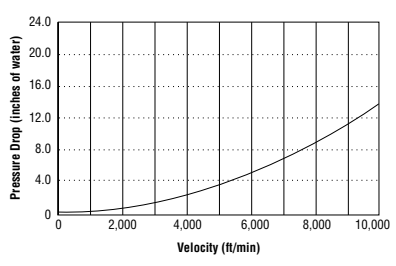
## End-In End-Out

Hospital Grade (35–42 dB)



∴ 2"–3.5" connections have slotted tubes or threaded pipes.

A Inlet Size	Connection Type	Part Number	B Silencer Diameter	C Body Length	D Overall Length	E Inlet/Outlet Length	F Inlet Offset	Weight
2	Slotted	61402C	10	30	34	2	N/A	40
2	NPT	61402P	10	30	34	2	N/A	40
2.5	Slotted	61425C	10	30	36	3	N/A	40
2.5	NPT	61425P	10	30	36	3	N/A	40
3	Slotted	61403C	12	36	42	3	N/A	55
3	NPT	61403P	12	36	42	3	N/A	55
3.5	Slotted	61435C	12	36	42	3	N/A	85
3.5	NPT	61435P	12	36	42	3	N/A	85
4	Flange	61404F	14	42	48	3	N/A	95
5	Flange	61405F	16	48	56	4	N/A	140
6	Flange	61406F	20	60	68	4	N/A	225
8	Flange	61408F	24	72	80	4	N/A	390
10	Flange	61410F	30	90	98	4	N/A	580
12	Flange	61412F	36	108	116	4	N/A	1000
14	Flange	61414F	42	126	134	4	N/A	1325
16	Flange	61416F	42	126	134	4	N/A	1390
18	Flange	61418F	48	144	152	4	N/A	1765
20	Flange	61420F	54	162	170	4	N/A	2240
22	Flange	61422F	60	180	188	4	N/A	3530



∴ All dimensions are in inches unless otherwise stated.  
All weights are in lbs and are approximate.

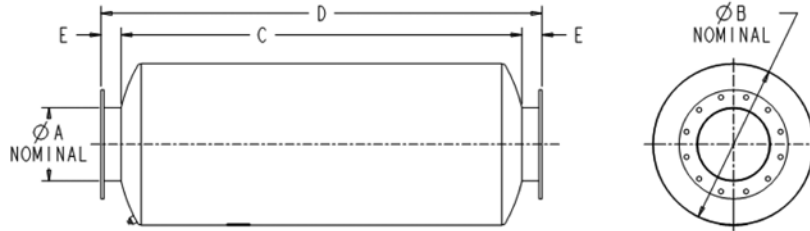
∴ All information correct at time of printing. Universal has a policy of continuous improvement. Therefore we reserve the right to change the specifications of these silencers without notice.

**Need something similar with slight modifications?**  
Mark up the outline drawing above and fax to (608) 873-7298 or scan and email to [info@universalAET.com](mailto:info@universalAET.com)

# Type 1 Configuration

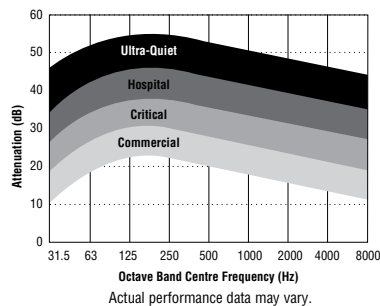
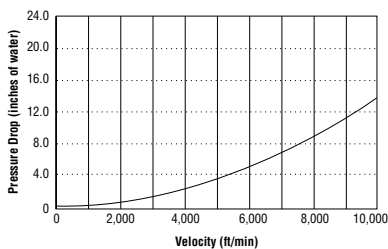
## End-In End-Out

Ultra-Quiet Grade (42–50 dB)



∴ 2"–3.5" connections have slotted tubes or threaded pipes.

A Inlet Size	Connection Type	Part Number	B Silencer Diameter	C Body Length	D Overall Length	E Inlet/Outlet Length	F Inlet Offset	Weight
2	Slotted	61502C	10	30	34	2	N/A	50
2	NPT	61502P	10	30	34	2	N/A	50
2.5	Slotted	61525C	12	36	42	3	N/A	75
2.5	NPT	61525P	12	36	42	3	N/A	75
3	Slotted	61503C	12	36	42	3	N/A	75
3	NPT	61503P	12	36	42	3	N/A	75
3.5	Slotted	61535C	14	42	48	3	N/A	105
3.5	NPT	61535P	14	42	48	3	N/A	105
4	Flange	61504F	16	48	54	3	N/A	170
5	Flange	61505F	18	54	62	4	N/A	220
6	Flange	61506F	22	66	74	4	N/A	385
8	Flange	61508F	26	78	86	4	N/A	540
10	Flange	61510F	36	108	116	4	N/A	1160
12	Flange	61512F	42	126	134	4	N/A	1600
14	Flange	61514F	42	126	134	4	N/A	1665
16	Flange	61516F	48	144	152	4	N/A	2140
18	Flange	61518F	54	162	170	4	N/A	2725
20	Flange	61520F	60	180	188	4	N/A	4050
22	Flange	61522F	66	198	206	4	N/A	4850



∴ All dimensions are in inches unless otherwise stated.  
All weights are in lbs and are approximate.

∴ All information correct at time of printing. Universal has a policy of continuous improvement. Therefore we reserve the right to change the specifications of these silencers without notice.

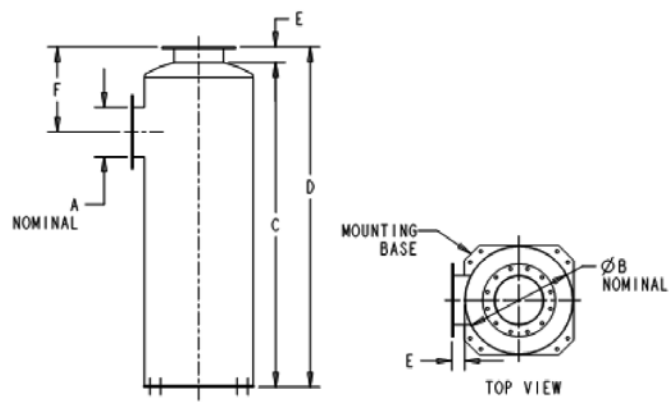
**Need something similar with slight modifications?**

Mark up the outline drawing above and fax to (608) 873-7298 or scan and email to [info@universalAET.com](mailto:info@universalAET.com)

# Type 2 Configuration

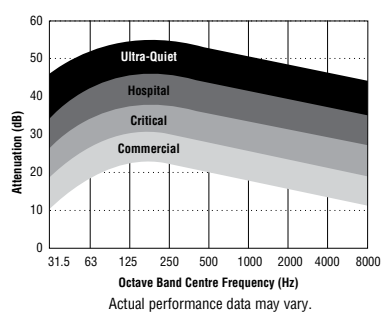
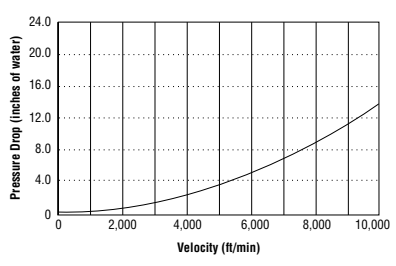
## Side-In Top-Out Vertical Mount

Critical Grade (25–35 dB)



∴ 2"–3.5" connections have slotted tubes.

A Inlet Size	Connection Type	Part Number	B Silencer Diameter	C Body Length	D Overall Length	E Inlet/Outlet Length	F Inlet Offset	Weight
2	Slotted	62302C	8	24	26	2	8	40
2.5	Slotted	62325C	8	24	27	3	9	40
3	Slotted	62303C	10	30	33	3	10	65
3.5	Slotted	62335C	10	30	33	3	10	65
4	Flange	62304F	12	36	39	3	11	105
5	Flange	62305F	14	42	46	4	13	145
6	Flange	62306F	16	48	52	4	14	220
8	Flange	62308F	20	60	64	4	16	340
10	Flange	62310F	24	72	76	4	19	565
12	Flange	62312F	30	90	94	4	22	890
14	Flange	62314F	36	108	112	4	24	1460
16	Flange	62316F	42	126	130	4	26	2100
18	Flange	62318F	42	126	130	4	28	2100
20	Flange	62320F	48	144	148	4	30	2740
22	Flange	62322F	54	162	166	4	32	3430



Actual performance data may vary.

∴ All dimensions are in inches unless otherwise stated.  
All weights are in lbs and are approximate.

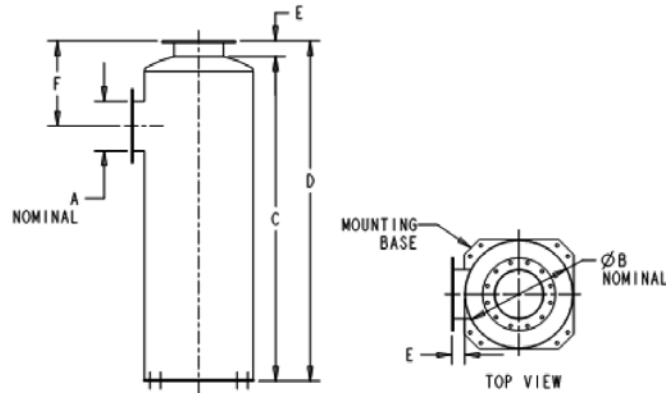
∴ All information correct at time of printing. Universal has a policy of continuous improvement. Therefore we reserve the right to change the specifications of these silencers without notice.

**Need something similar with slight modifications?**  
Mark up the outline drawing above and fax to (608) 873-7298 or scan and email to [info@universalAET.com](mailto:info@universalAET.com)

# Type 2 Configuration

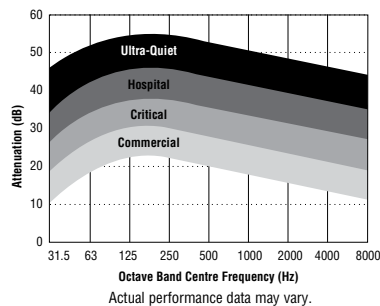
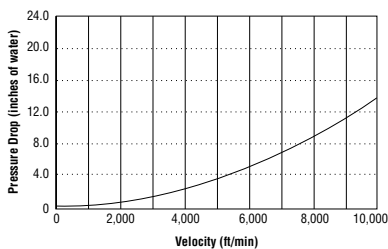
## Side-In Top-Out Vertical Mount

Hospital Grade (35–42 dB)



∴ 2"–3.5" connections have slotted tubes.

A Inlet Size	Connection Type	Part Number	B Silencer Diameter	C Body Length	D Overall Length	E Inlet/Outlet Length	F Inlet Offset	Weight
2	Slotted	62402C	10	30	32	2	8	65
2.5	Slotted	62425C	10	30	33	3	9	65
3	Slotted	62403C	12	36	39	3	10	90
3.5	Slotted	62435C	12	36	39	3	10	95
4	Flange	62404F	14	42	45	3	11	150
5	Flange	62405F	16	48	52	4	13	220
6	Flange	62406F	20	60	64	4	14	350
8	Flange	62408F	24	72	76	4	16	580
10	Flange	62410F	30	90	94	4	19	880
12	Flange	62412F	36	108	112	4	22	1345
14	Flange	62414F	42	126	130	4	24	2120
16	Flange	62416F	42	126	130	4	26	2120
18	Flange	62418F	48	144	148	4	28	2710
20	Flange	62420F	54	162	166	4	30	3580
22	Flange	62422F	60	180	184	4	32	4580



∴ All dimensions are in inches unless otherwise stated.  
All weights are in lbs and are approximate.

∴ All information correct at time of printing. Universal has a policy of continuous improvement. Therefore we reserve the right to change the specifications of these silencers without notice.

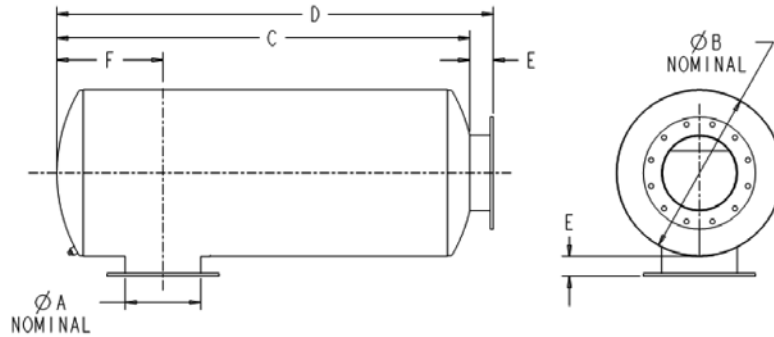
**Need something similar with slight modifications?**

Mark up the outline drawing above and fax to (608) 873-7298 or scan and email to [info@universalAET.com](mailto:info@universalAET.com)

# Type 3 Configuration

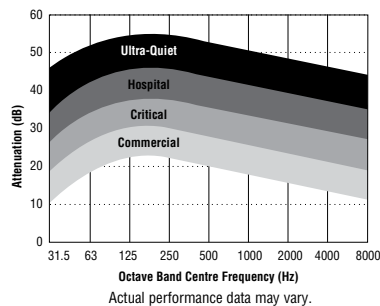
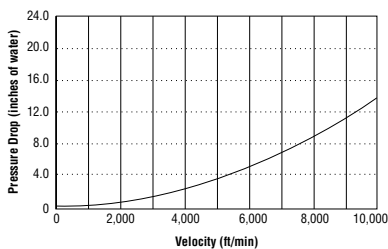
## Side-In End-Out

### Commercial Grade (15–25 dB)



∴ 2"–3.5" connections have slotted tubes or threaded pipes.

A Inlet Size	Connection Type	Part Number	B Silencer Diameter	C Body Length	D Overall Length	E Inlet/Outlet Length	F Inlet Offset	Weight
2	Slotted	63202C	5	12.5	14.5	2	3	8
2	NPT	63202P	5	12.5	14.5	2	3	8
2.5	Slotted	63225C	6	15	18	3	4	14
2.5	NPT	63225P	6	15	18	3	4	14
3	Slotted	63203C	8	20	23	3	5	20
3	NPT	63203P	8	20	23	3	5	20
3.5	Slotted	63235C	8	20	23	3	5	25
3.5	NPT	63235P	8	20	23	3	5	25
4	Flange	63204F	10	25	28	3	6	40
5	Flange	63205F	12	30	34	4	7	55
6	Flange	63206F	14	35	39	4	8	75
8	Flange	63208F	18	45	49	4	10	130
10	Flange	63210F	22	55	59	4	12	235
12	Flange	63212F	26	65	69	4	14	335
14	Flange	63214F	30	75	79	4	15	445
16	Flange	63216F	36	90	94	4	20	660
18	Flange	63218F	42	105	109	4	22	1000
20	Flange	63220F	42	105	109	4	24	1050
22	Flange	63222F	48	120	124	4	26	1350



∴ All dimensions are in inches unless otherwise stated.  
All weights are in lbs and are approximate.

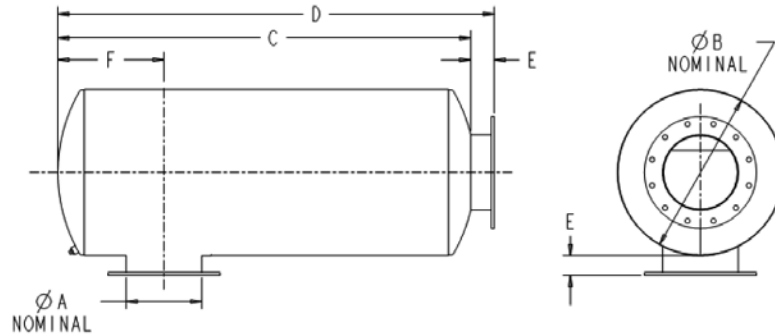
∴ All information correct at time of printing. Universal has a policy of continuous improvement. Therefore we reserve the right to change the specifications of these silencers without notice.

### Need something similar with slight modifications?

Mark up the outline drawing above and fax to (608) 873-7298 or scan and email to [info@universalAET.com](mailto:info@universalAET.com)

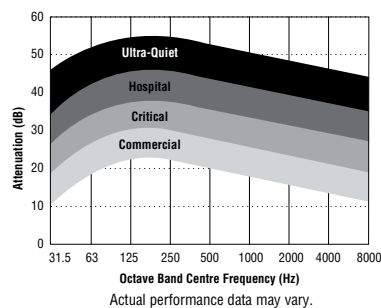
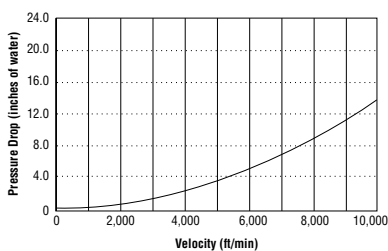
## Type 3 Configuration Side-In End-Out

Critical Grade (25–35 dB)



∴ 2"–3.5" connections have slotted tubes or threaded pipes.

A Inlet Size	Connection Type	Part Number	B Silencer Diameter	C Body Length	D Overall Length	E Inlet/Outlet Length	F Inlet Offset	Weight
2	Slotted	63302C	8	24	26	2	3	25
2	NPT	63302P	8	24	26	2	3	25
2.5	Slotted	63325C	8	24	27	3	4	25
2.5	NPT	63325P	8	24	27	3	4	25
3	Slotted	63303C	10	30	33	3	5	40
3	NPT	63303P	10	30	33	3	5	40
3.5	Slotted	63335C	10	30	33	3	5	40
3.5	NPT	63335P	10	30	33	3	5	40
4	Flange	63304F	12	36	39	3	6	70
5	Flange	63305F	14	42	46	4	7	100
6	Flange	63306F	16	48	52	4	8	140
8	Flange	63308F	20	60	64	4	10	210
10	Flange	63310F	24	72	76	4	13	370
12	Flange	63312F	30	90	94	4	16	580
14	Flange	63314F	36	108	112	4	18	1025
16	Flange	63316F	42	126	130	4	20	1425
18	Flange	63318F	42	126	130	4	22	1540
20	Flange	63320F	48	144	148	4	24	1885
22	Flange	63322F	54	162	166	4	26	2315



∴ All dimensions are in inches unless otherwise stated.  
All weights are in lbs and are approximate.

∴ All information correct at time of printing. Universal has a policy of continuous improvement. Therefore we reserve the right to change the specifications of these silencers without notice.

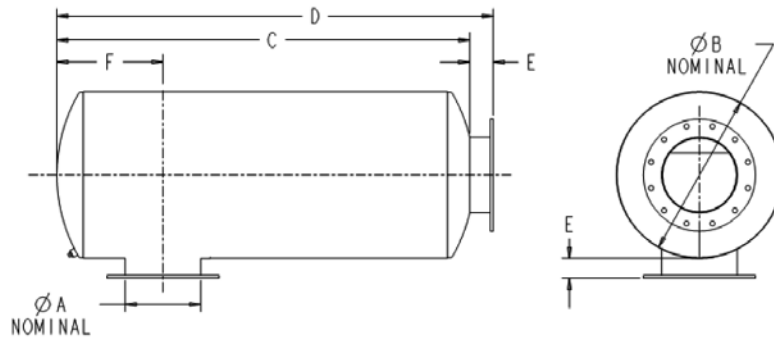
**Need something similar with slight modifications?**

Mark up the outline drawing above and fax to (608) 873-7298 or scan and email to [info@universalAET.com](mailto:info@universalAET.com)

# Type 3 Configuration

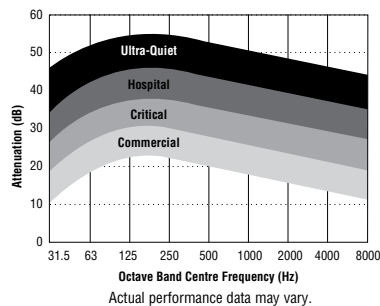
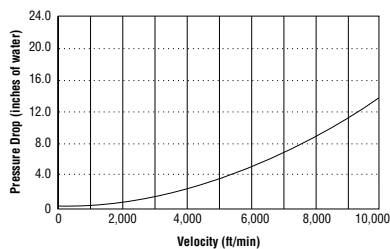
## Side-In End-Out

Hospital Grade (35–42 dB)



∴ 2"–3.5" connections have slotted tubes or threaded pipes.

A Inlet Size	Connection Type	Part Number	B Silencer Diameter	C Body Length	D Overall Length	E Inlet/Outlet Length	F Inlet Offset	Weight
2	Slotted	63402C	10	30	32	2	3	40
2	NPT	63402P	10	30	32	2	3	40
2.5	Slotted	63425C	10	30	33	3	4	40
2.5	NPT	63425P	10	30	33	3	4	40
3	Slotted	63403C	12	36	39	3	5	55
3	NPT	63403P	12	36	39	3	5	55
3.5	Slotted	63435C	12	36	39	3	5	60
3.5	NPT	63435P	12	36	39	3	5	60
4	Flange	63404F	14	42	45	3	6	95
5	Flange	63405F	16	48	52	4	7	130
6	Flange	63406F	20	60	64	4	8	185
8	Flange	63408F	24	72	76	4	10	400
10	Flange	63410F	30	90	94	4	13	680
12	Flange	63412F	36	108	112	4	16	1070
14	Flange	63414F	42	126	130	4	18	1400
16	Flange	63416F	42	126	130	4	20	1400
18	Flange	63418F	48	144	148	4	22	1860
20	Flange	63420F	54	162	166	4	24	2330
22	Flange	63422F	60	180	184	4	26	3540



∴ All dimensions are in inches unless otherwise stated.  
All weights are in lbs and are approximate.

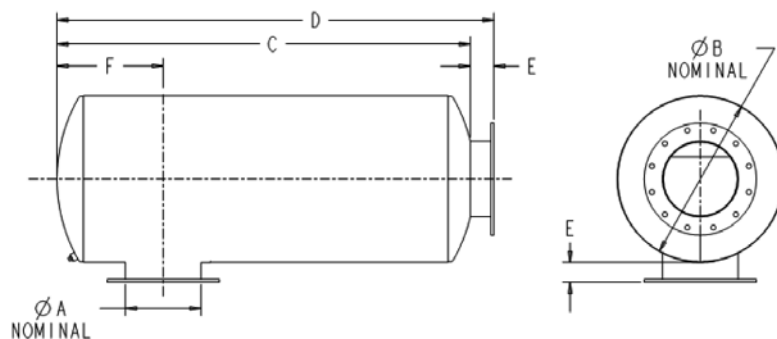
∴ All information correct at time of printing. Universal has a policy of continuous improvement. Therefore we reserve the right to change the specifications of these silencers without notice.

**Need something similar with slight modifications?**

Mark up the outline drawing above and fax to (608) 873-7298 or scan and email to [info@universalAET.com](mailto:info@universalAET.com)

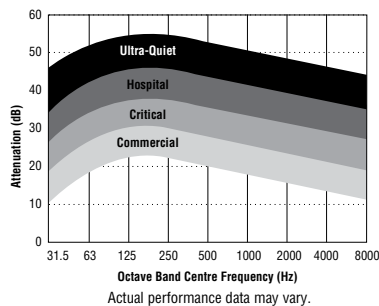
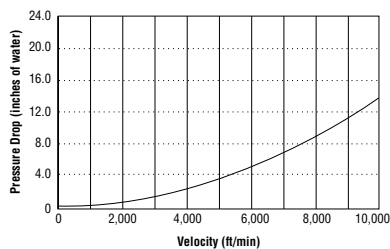
## Type 3 Configuration Side-In End-Out

Ultra-Quiet Grade (42–50 dB)



• 2"–3.5" connections have slotted tubes or threaded pipes.

A Inlet Size	Connection Type	Part Number	B Silencer Diameter	C Body Length	D Overall Length	E Inlet/Outlet Length	F Inlet Offset	Weight
2	Slotted	63502C	10	30	32	2	3	50
2	NPT	63502P	10	30	32	2	3	50
2.5	Slotted	63525C	12	36	39	3	4	75
2.5	NPT	63525P	12	36	39	3	4	75
3	Slotted	63503C	12	36	39	3	5	75
3	NPT	63503P	12	36	39	3	5	75
3.5	Slotted	63535C	14	42	45	3	5	95
3.5	NPT	63535P	14	42	45	3	5	95
4	Flange	63504F	16	48	51	3	6	165
5	Flange	63505F	18	54	58	4	7	215
6	Flange	63506F	22	66	70	4	8	390
8	Flange	63508F	26	78	82	4	10	550
10	Flange	63510F	36	108	112	4	13	1190
12	Flange	63512F	42	126	130	4	16	1650
14	Flange	63514F	42	126	130	4	18	1680
16	Flange	63516F	48	144	148	4	20	2180
18	Flange	63518F	54	162	166	4	22	2900
20	Flange	63520F	60	180	184	4	24	4150
22	Flange	63522F	66	198	202	4	26	4975



• All dimensions are in inches unless otherwise stated.  
All weights are in lbs and are approximate.

• All information correct at time of printing. Universal has a policy of continuous improvement. Therefore we reserve the right to change the specifications of these silencers without notice.

**Need something similar with slight modifications?**

Mark up the outline drawing above and fax to (608) 873-7298 or scan and email to [info@universalAET.com](mailto:info@universalAET.com)

# Global Support

Contact a global office for assistance in the design and manufacture of your exhaust system requirements.



Av. Mantenimiento No. 130,  
Col. Zona Industrial, C.P. 78395  
San Luis Potosi, S.L.P.  
Mexico  
Phone +52 444-8704708  
info@universalAET.com

Unit 2, Barleyfield  
Hinckley Fields Industrial Estate  
Hinckley Leicestershire  
LE10 IYE  
Phone +44 (0)1455 894470  
UKcontacts@universalAET.com

71 Bukit Batok Crescent #05-07  
Prestige Centre  
Singapore 658071  
Singapore  
Phone +65-6665 6771  
AsiaPacific@universalAET.com

4, Anmol Pride, Survey No.  
270/1/16  
Baner Rd., Baner  
Pune 411045  
India  
Phone +020-32319914  
India@universalAET.com

Suite 13C, No 58 Xin Jin Qiao Rd.  
Shanghai 201206  
China  
Phone +86 21 50303658  
China@universalAET.com

Zeppelinstrasse 4  
82178 Puchheim  
Germany  
Phone +49 (0)89 8006 5090  
GmbH@universalAET.com

1925 Highway 51/138  
P.O. Box 411  
Stoughton, WI 53589 USA  
Phone +1 (608) 873-4272  
info@universalAET.com



**UNIVERSAL**  
*Acoustic & Emission Technologies*

## GLOBAL HEADQUARTERS

Universal  
1925 Highway 51/138  
P.O. Box 411  
Stoughton, WI 53589 USA  
Phone (608) 873-4272  
Fax (608) 873-4298  
info@universalAET.com  
www.universalAET.com