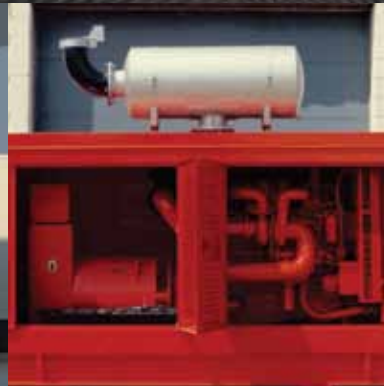




UNIVERSAL
Acoustic & Emission Technologies



QuietShield™ Engine Silencers

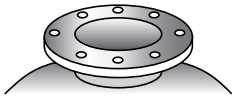
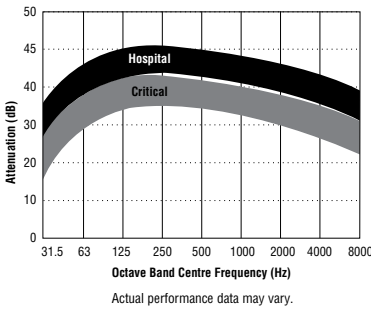
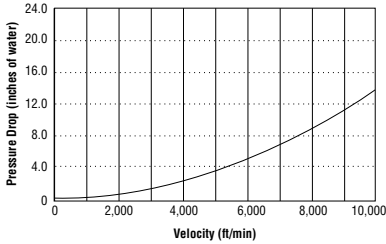
20–25% Smaller Size

50% Reduced Engine Backpressure

35% Better Acoustic Performance

QuietShield’s low profile line is ideal for applications with little available space—such as enclosures for gen sets, compressors, water pumps, or cramped utility rooms. These silencers have a high performance internal design that delivers excellent silencing in a smaller package size than conventional silencers.

Low Profile Silencers



**“125/150# ANSI”
Mounting Flange:**
Standard on all inlet sizes.

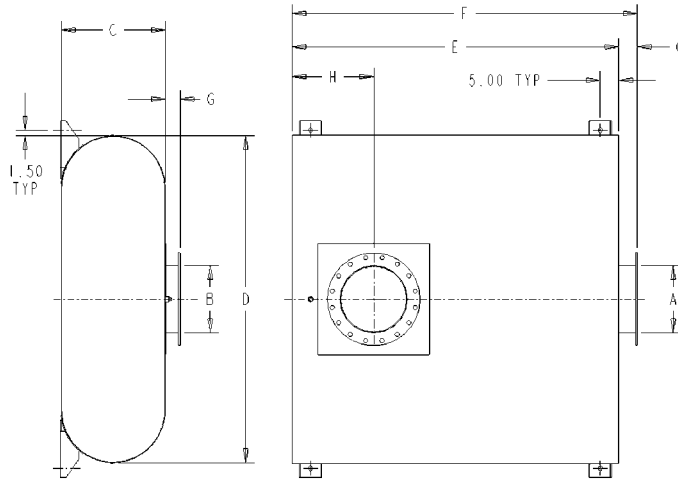
	Critical	Hospital
Attenuation Level	25–35 dB(A)	35–42 dB(A)
Orientation	Horizontal or Vertical	Horizontal or Vertical
Standard Plate Flange	5 in–20 in bore, drilled to 125/150# ANSI standard	5 in–20 in bore, drilled to 125/150# ANSI standard
Optional Flanges	BS10, JIS, DIN and others	BS10, JIS, DIN and others
Mounting Tabs	Standard-bottom Optional-top	Standard-bottom Optional-top
Finish	Silver high heat paint; optional black high heat paint	Silver high heat paint; optional black high heat paint
Standard Material	Mild steel – max temp 1,000°F	Mild steel – max temp 1,000°F
Optional Material	Aluminized steel Stainless steel grades 304L, 316 & 409 – max temp 1,500°F	Aluminized steel Stainless steel grades 304L, 316 & 409 – max temp 1,500°F
Configuration Types	Type E, F Single or dual inlets	Type E, F Single or dual inlets
Standard Low Skin Temperature	Yes	Yes
Optional Assemblies	<ul style="list-style-type: none"> • Rain Caps • Wye Connections • Flex Connectors • Expanders/Reducers • Elbows • Straight Tube • Exhaust Pipe • Attachment Brackets • Nut, Bolt & Gasket Kits • Gaskets • Reduction Flanges • Companion Flange Kits • Insulation Blankets 	<ul style="list-style-type: none"> • Rain Caps • Wye Connections • Flex Connectors • Expanders/Reducers • Elbows • Straight Tube • Exhaust Pipe • Attachment Brackets • Nut, Bolt & Gasket Kits • Gaskets • Reduction Flanges • Companion Flange Kits • Insulation Blankets

•• All dimensions are in inches unless otherwise stated.
All weights are in lbs and are approximate.

•• All information correct at time of printing. Universal has a policy of continuous improvement. Therefore we reserve the right to change the specifications of these silencers without notice.

Type E Configuration

Single-Inlet, Low-Profile Oval, Side-In End-Out



Inlet locations can be relocated for additional charge. Indicate on order.

Critical Grade-Low Skin Temperature (25–35dB)

A Outlet Size	B Inlet Config. & Size	Part Number	C Body Depth	D Body Width	E Body Length	F Overall Length	G Inlet/Outlet Length	H Inlet Offset	J Inlet Spread	Weight
8	Single 8	6E-708F	15	45	45	49	4	10	N/A	545
10	Single 10	6E-710F	18	52	52	56	4	12	N/A	750
12	Single 12	6E-712F	21	62	62	66	4	14	N/A	1000
14	Single 14	6E-714F	23	65	65	69	4	17	N/A	1265
16	Single 16	6E-716F	25	74	74	78	4	20	N/A	1600
18	Single 18	6E-718F	27	84	84	88	4	22	N/A	1980
20	Single 20	6E-720F	30	88	88	92	4	24	N/A	2380

∴ All connections have ANSI flanges as standard.

Hospital Grade-Low Skin Temperature (35–42dB)

A Outlet Size	B Inlet Config. & Size	Part Number	C Body Depth	D Body Width	E Body Length	F Overall Length	G Inlet/Outlet Length	H Inlet Offset	J Inlet Spread	Weight
8	Single 8	6E-808F	15	52	52	56	4	10	N/A	630
10	Single 10	6E-810F	18	59	59	63	4	12	N/A	850
12	Single 12	6E-812F	21	65	65	69	4	14	N/A	1120
14	Single 14	6E-814F	24	70	70	74	4	17	N/A	1440
16	Single 16	6E-816F	28	75	75	79	4	20	N/A	1825
18	Single 18	6E-818F	30	86	86	90	4	22	N/A	2250
20	Single 20	6E-820F	34	92	92	96	4	24	N/A	2750

∴ All connections have ANSI flanges as standard.

∴ All dimensions are in inches unless otherwise stated.
All weights are in lbs and are approximate.

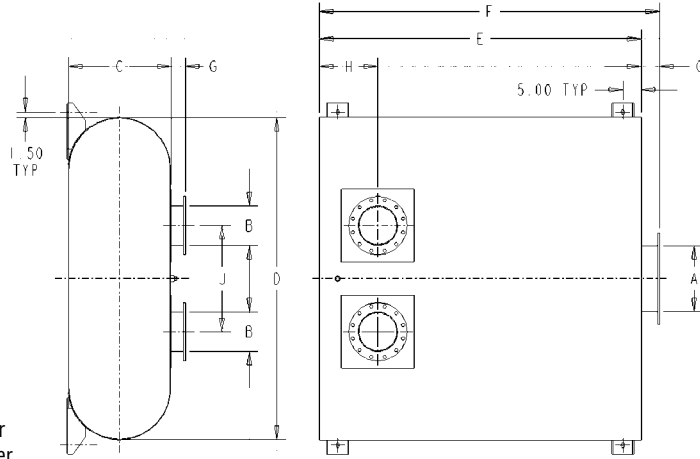
∴ All information correct at time of printing. Universal has a policy of continuous improvement. Therefore we reserve the right to change the specifications of these silencers without notice.

Need something similar with slight modifications?

Mark up the outline drawing above and fax to (608) 873-7298 or scan and email to info@universalAET.com

Type F Configuration

Dual-Inlet, Low-Profile Oval, Side-In End-Out



Inlet locations can be relocated for additional charge. Indicate on order.

Critical Grade-Low Skin Temperature (25–35dB)

A Outlet Size	B Inlet Config. & Size	Part Number	C Body Depth	D Body Width	E Body Length	F Overall Length	G Inlet/ Outlet Length	H Inlet Offset	J Inlet Spread	Weight
8	Dual 5	6F-708F	15	45	45	49	4	10	20	545
10	Dual 6	6F-710F	18	52	52	56	4	12	22	750
12	Dual 8	6F-712F	21	62	62	66	4	14	25	1000
14	Dual 10	6F-714F	23	65	65	69	4	17	22	1265
16	Dual 12	6F-716F	25	74	74	78	4	20	25	1600
18	Dual 14	6F-718F	27	84	84	88	4	22	29	1980
20	Dual 16	6F-720F	30	88	88	92	4	24	26	2380
22	Dual 16	6F-722F	33	94	94	100	4	24	26	2980

•• All connections have ANSI flanges as standard.

Hospital Grade-Low Skin Temperature (35–42dB)

A Outlet Size	B Inlet Config. & Size	Part Number	C Body Depth	D Body Width	E Body Length	F Overall Length	G Inlet/ Outlet Length	H Inlet Offset	J Inlet Spread	Weight
8	Dual 5	6F-808F	15	52	52	56	4	10	27	630
10	Dual 6	6F-810F	18	59	59	63	4	12	29	850
12	Dual 8	6F-812F	21	65	65	69	4	14	33	1120
14	Dual 10	6F-814F	24	70	70	74	4	17	26	1440
16	Dual 12	6F-816F	28	75	75	79	4	20	23	1825
18	Dual 14	6F-818F	30	86	86	90	4	22	28	2250
20	Dual 16	6F-820F	34	92	92	96	4	24	26	2750
22	Dual 16	6F-822F	38	98	98	102	4	24	26	3475

•• All connections have ANSI flanges as standard.

•• All dimensions are in inches unless otherwise stated.
All weights are in lbs and are approximate.

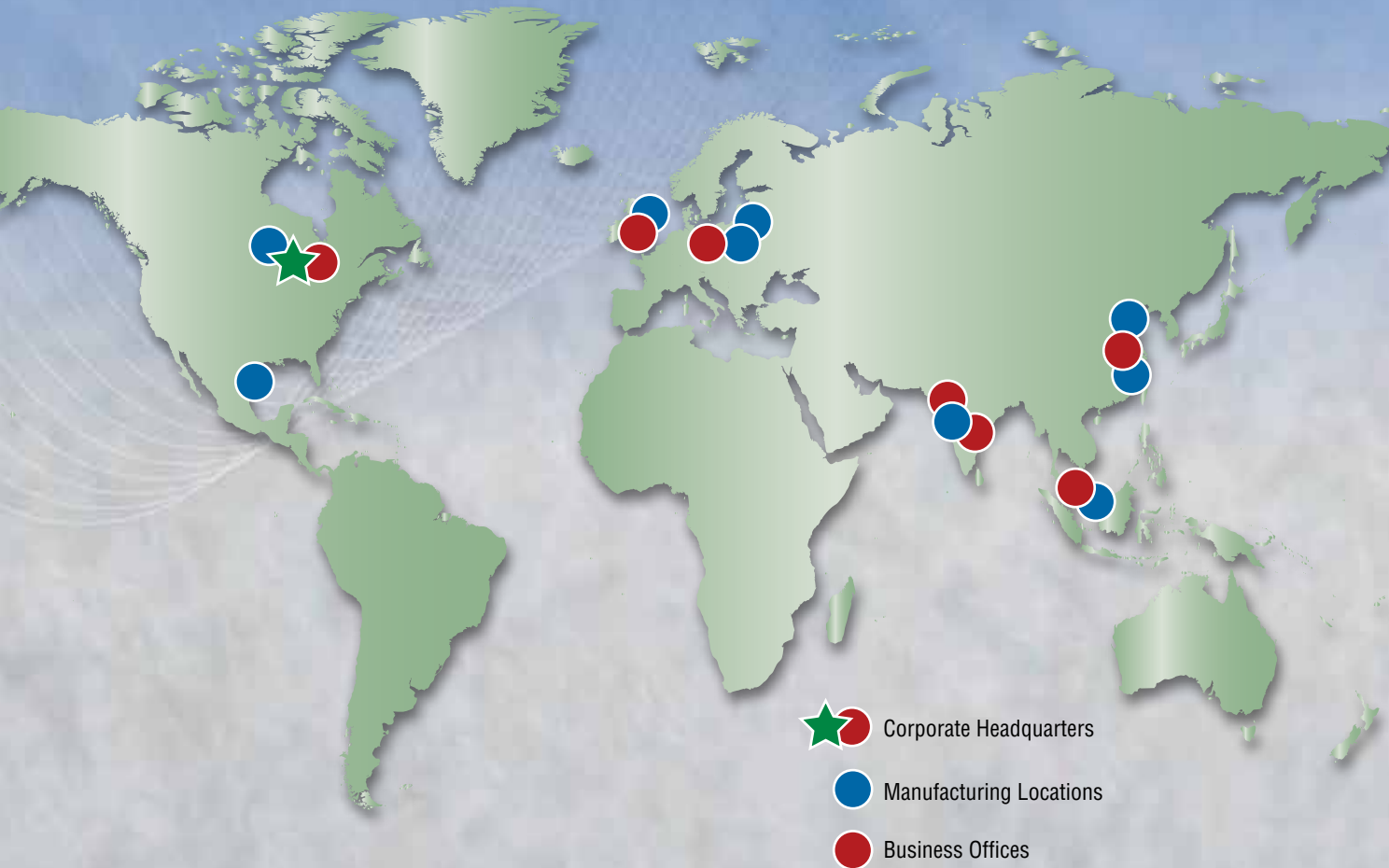
•• All information correct at time of printing. Universal has a policy of continuous improvement. Therefore we reserve the right to change the specifications of these silencers without notice.

Need something similar with slight modifications?

Mark up the outline drawing above and fax to (608) 873-7298 or scan and email to info@universalAET.com

Global Support

Contact a global office for assistance in the design and manufacture of your exhaust system requirements.



Av. Mantenimiento No. 130,
Col. Zona Industrial, C.P. 78395
San Luis Potosi, S.L.P.
Mexico
Phone +52 444-8704708
info@universalAET.com

Unit 2, Barleyfield
Hinckley Fields Industrial Estate
Hinckley Leicestershire
LE10 IYE
Phone +44 (0)1455 894470
UKcontacts@universalAET.com

71 Bukit Batok Crescent #05-07
Prestige Centre
Singapore 658071
Singapore
Phone +65-6665 6771
AsiaPacific@universalAET.com

4, Anmol Pride, Survey No.
270/1/16
Baner Rd., Baner
Pune 411045
India
Phone +020-32319914
India@universalAET.com

Suite 13C, No 58 Xin Jin Qiao Rd.
Shanghai 201206
China
Phone +86 21 50303658
China@universalAET.com

Zeppelinstrasse 4
82178 Puchheim
Germany
Phone +49 (0)89 8006 5090
GmbH@universalAET.com

1925 Highway 51/138
P.O. Box 411
Stoughton, WI 53589 USA
Phone +1 (608) 873-4272
info@universalAET.com



UNIVERSAL
Acoustic & Emission Technologies

GLOBAL HEADQUARTERS

Universal
1925 Highway 51/138
P.O. Box 411
Stoughton, WI 53589 USA
Phone (608) 873-4272
Fax (608) 873-4298
info@universalAET.com
www.universalAET.com