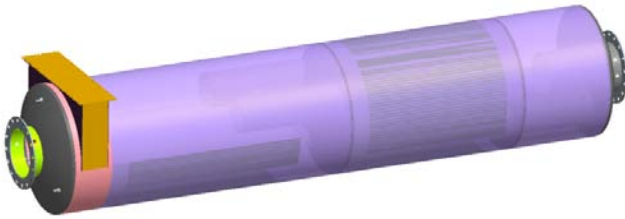




Standard Design Specification



Features

- High reduction efficiency of NOx (Nitrogen Oxides), CO (Carbon Monoxide), H₂CO (Formaldehyde) and NMNEHC (Non-Methane, Non-Ethane HydroCarbon) reduction efficiency in a compact package
- Low leak housing design
- Robust, positive catalyst sealing design ensures maximum exhaust gas treatment
- Stainless Steel catalyst substrates, braised or diffusion bonded for superior durability
- Dual substrate housing provides option to upgrade emission performance with same housing
- Easy to service – no internal clips or fasteners
- Available with or without integrated silencing. Catalytic Silencers available in four silencer grades: Industrial, Residential, Critical and Hospital
- Available with multiple optional mounting options

Specifications

Fuel:	Pipeline quality natural gas with less than 0.5 g/100 scf sulfur and less than 0.25 g/100 scf of hydrogen sulfide.
Flow-rate:	Up to 5,950 SCFM (15,595 ACFM at 900°F) with dual catalysts.
Emissions Reduction (above 900°F with dual catalysts, < 2,232 SCFM):	
	NOx: < 99%
	CO: < 98%
	NMNEHC: < 88%
	H ₂ CO: < 98%
Temperature Range:	482-1200°F
Housing Dimensions:	Reference catalog 94-1462, Pg 3.1.
Noise Attenuation:	Reference catalog 94-1462, Pg 3.1.
Weight:	Reference catalog 94-1462, Pg 3.1.
Housing Material:	Painted carbon steel using high temperature aluminum paint. Optional stainless steel also available.
Sensor Ports:	Inlet: (2) ¾" female NPT and (1) female M18 fittings located on inlet nozzle Outlet: (2) ¾" female NPT and (1) female M18 fittings located on outlet nozzle
Mounting Brackets:	Reference catalog LT32671, Pg 2.26.

These specifications represent Universal Emission Technologies' standard DOC designs. Universal Emission Technologies can provide custom designs to meet your specific system performance requirements.

These specifications are typical for a wide range of applications. Individual results may vary depending on engine operating conditions, performance and fuel specifications.