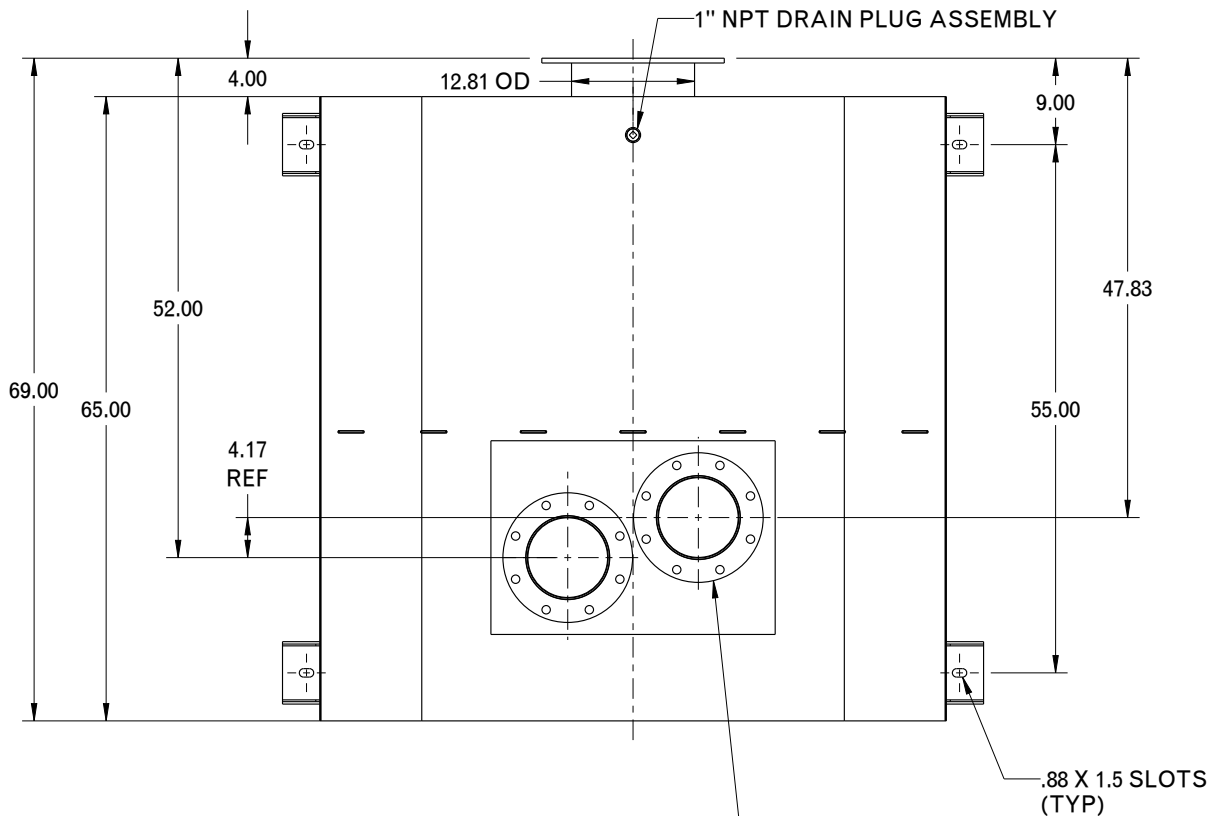
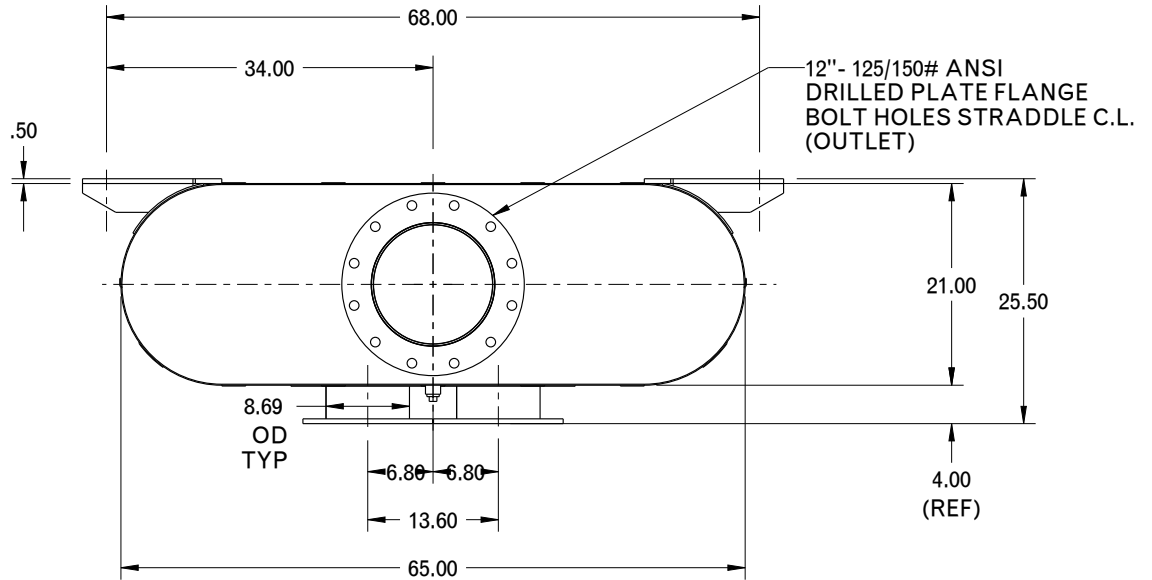


REVISION RECORD

NO.	CHANGE DESCRIPTION	DRAWN	APP'D
-----	--------------------	-------	-------



DIMENSIONS CERTIFIED FOR:

P.O. NO:  
U.S. S.O. NO:  
BY  
DATE

**For Cummins QST30 Engines**

8" - 125/150# ANSI  
DRILLED PLATE FLANGE  
BOLT HOLES STRADDLE C.L.  
(BOTH INLETS)

TOLERANCES UNLESS STATED - SEE FULL SPEC. 88-0075			
(mm)	US customary (")	(mm)	US customary (")
0-300	0-12	±1.6	±1/16
>300-600	>12-24	±3	±1/8
>600-900	>24-36	±5	±3/16
>900-6000	>36-240	±6	±1/4
>6000	>240	±12	±1/2
ANGULAR TOL		±2 °	
APPROX. WT.	1075 LBS	MATERIAL	STEEL
FINISH	88-0219 BLACK HIGH HEAT ENAMEL		

Copyright © 2010 UNIVERSAL All Rights Reserved	
This Document and the information contained herein constitutes proprietary property, and shall not be copied or used or disclosed without the express written consent of Universal Acoustic & Emission Technologies Inc.	
NAME	DATE
DRAWN GDG	12APR2011
CHECKED JDM	13APR2011

<b>UNIVERSAL</b> Acoustic & Emissions Technologies	DESIGN CONTROL: STOUGHTON
	SCALE: DO NOT SCALE
DESCRIPTION <b>SPECIAL 12" W/8" DUAL INLETS HOSPITAL GRADE LOW-PROFILE EXHAUST SILENCER</b>	
THIRD ANGLE PROJECTION 	DIMENSIONAL DWG. NO: <b>6F-812-AB</b>
SHEET	REV.
1 OF 1	0