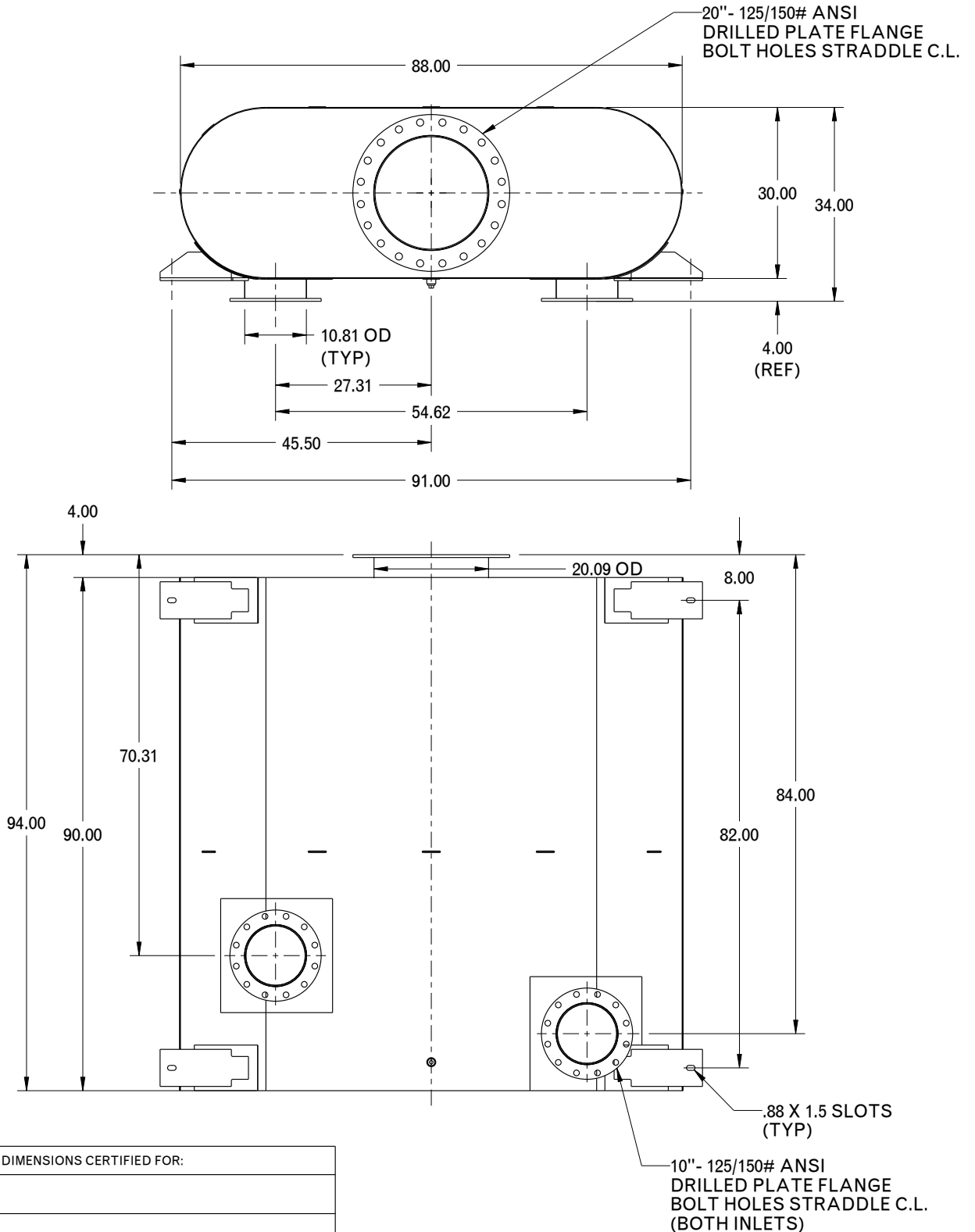


REVISION RECORD

NO.	CHANGE DESCRIPTION	DRAWN	APP'D
-----	--------------------	-------	-------



DIMENSIONS CERTIFIED FOR:	
P.O. NO:	
U.S. S.O. NO:	
BY	
DATE	

For Cummins QSK60 Engines

TOLERANCES UNLESS STATED - SEE FULL SPEC. 88-0075			
(mm)	US customary (")	(mm)	US customary (")
0-300	0-12	±1.6	±1/16
>300-600	>12-24	±3	±1/8
>600-900	>24-36	±5	±3/16
>900-6000	>36-240	±6	±1/4
>6000	>240	±12.5	±1/2
ANGULAR TOL		±2°	
APPROX. WT.	2380 LBS	MATERIAL	STEEL
FINISH	88-0219 BLACK HIGH HEAT ENAMEL		

Copyright © 2010 UNIVERSAL All Rights Reserved	
This Document and the information contained herein constitutes proprietary property, and shall not be copied or used or disclosed without the express written consent of Universal LLC. or Universal Europe, LTD.	
NAME	DATE
DRAWN MRS	01-03-11
CHECKED	

<b>UNIVERSAL</b> Acoustic & Emissions Technologies	DESIGN CONTROL: STOUGHTON
	SCALE: DO NOT SCALE
DESCRIPTION	SPECIAL 20" W/10" DUAL INLETS LOW-PROFILE EXHAUST SILENCER
THIRD ANGLE PROJECTION	DIMENSIONAL DWG. NO: 6F-720-AB
	SHEET 1 OF 1
	REV. 0