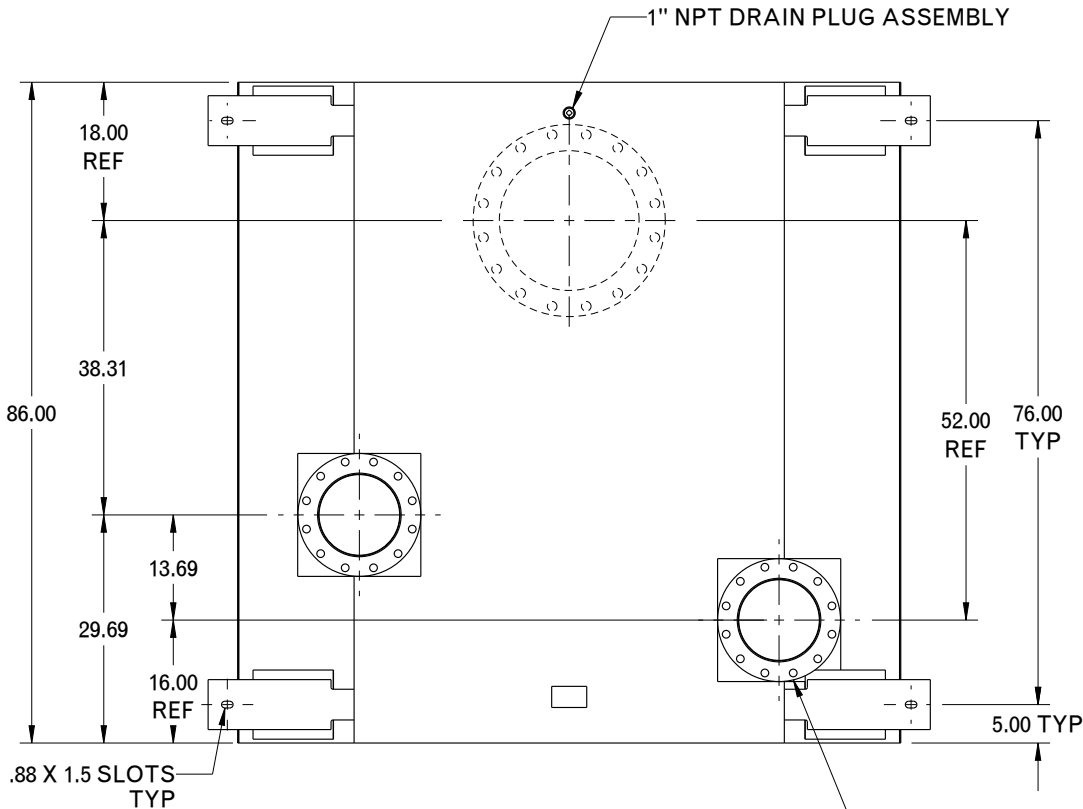
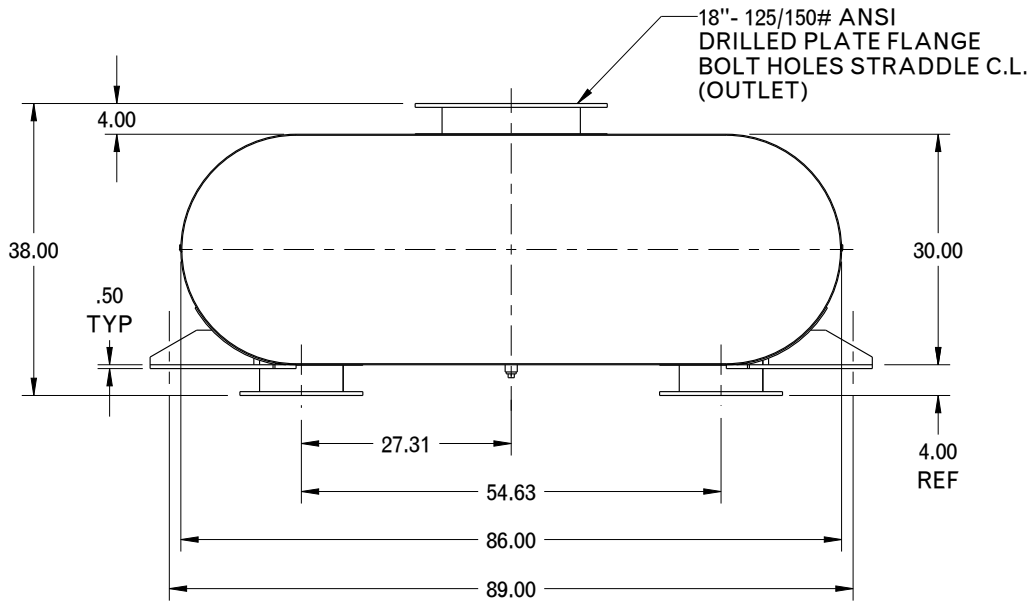


REVISION RECORD

NO.	CHANGE DESCRIPTION	DRAWN	APP'D
-----	--------------------	-------	-------



DIMENSIONS CERTIFIED FOR:

P.O. NO:
U.S. S.O. NO:
BY
DATE

Special top outlet design for Cummins QSK60 Engines

TOLERANCES UNLESS STATED - SEE FULL SPEC. 88-0075			
(mm)	US customary (")	(mm)	US customary (")
0-300	0-12	±1.6	±1/16
>300-600	>12-24	±3	±1/8
>600-900	>24-36	±5	±3/16
>900-6000	>36-240	±6	±1/4
>6000	>240	±12	±1/2
ANGULAR TOL		±2°	
APPROX. WT.	2250 LBS	MATERIAL	STEEL
FINISH	88-0219 HIGH HEAT SATIN BLACK		

Copyright © 2010 UNIVERSAL All Rights Reserved	
This Document and the information contained herein constitutes proprietary property, and shall not be copied or used or disclosed without the express written consent of Universal Acoustic & Emission Technologies Inc.	
NAME	DATE
DRAWN RPE	1SEP2011
CHECKED JDM	2SEP2011

UNIVERSAL Acoustic & Emissions Technologies	DESIGN CONTROL: STOUGHTON
	SCALE: DO NOT SCALE
DESCRIPTION	
SPECIAL 18" W/10" DUAL INLETS HOSPITAL GRADE LOW-PROFILE EXHAUST SILENCER	
THIRD ANGLE PROJECTION	SHEET REV.
DIMENSIONAL DWG. NO:	1 OF 1 0
6D-818-AB	