



UNIVERSAL SILENCER
 A FLEETGUARD COMPANY
 P.O. Box 411, Stoughton, Wisconsin 53589
 608-873-4272 Fax 608-873-4298

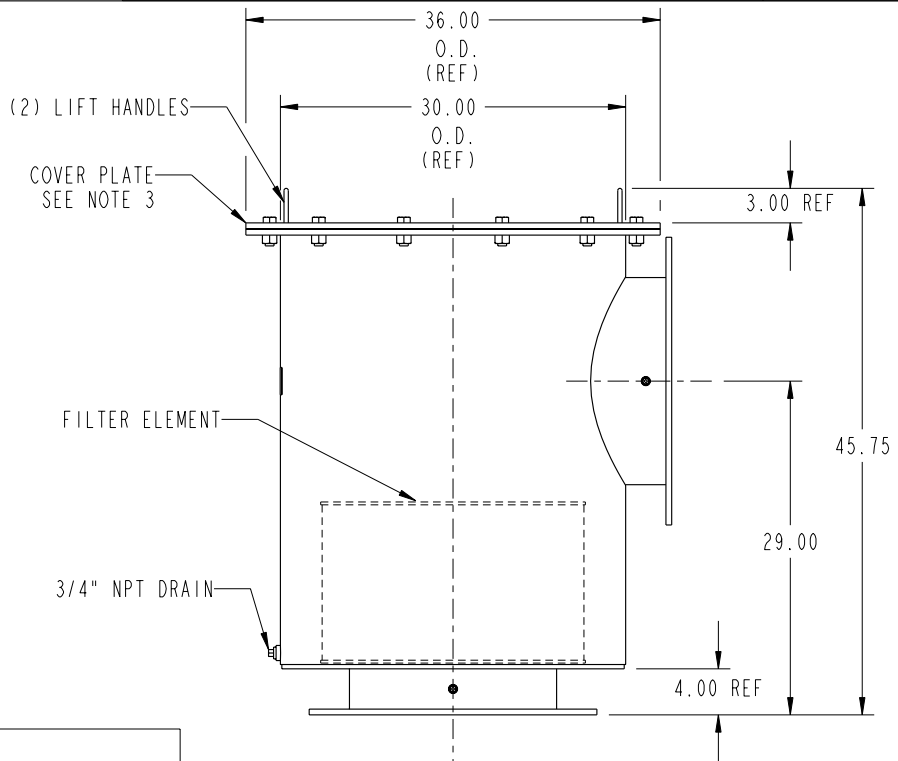
STANDARD 1LF-18
 INLINE FILTER

DATE 04-05-04

SHEET OF

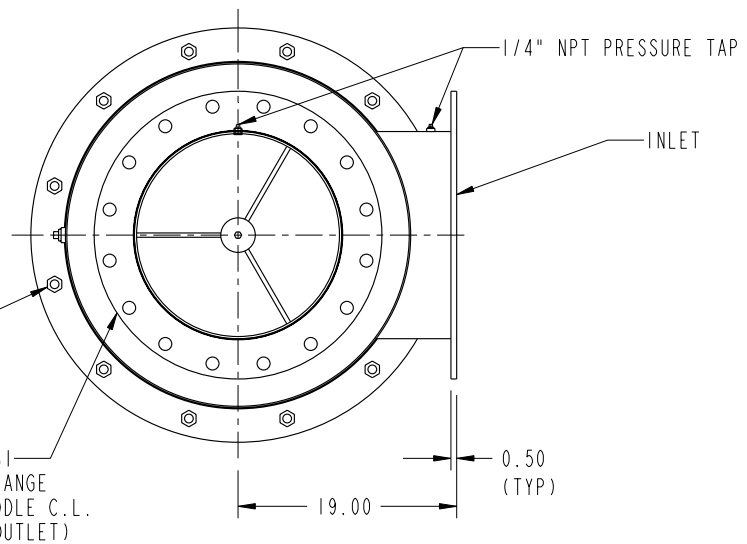
SCALE 0.060"=1"

NO.	
REVISION	
DRAWN	
APP'D	



NOTES:

- NON-ASME CODE CONSTRUCTION SUITABLE FOR MAXIMUM WORKING PRESSURE OF 15 PSI.
- NOMINAL CAPACITY: 9,700 CFM AT FLOW VELOCITY OF APPROX. 5,500 FT/ MIN.
- CLEARANCE REQUIRED ABOVE COVER PLATE FOR FILTER ACCESS IS 14.00".
- CLEAN OR REPLACE FILTER WHEN ΔP INCREASES 4" H₂O OVER CLEAN FILTER.
- PART NUMBER WAS 34-A18-AP.



(12) 3/4-10 UNC" x 2.00" LG BOLTS WITH NUTS TO SECURE TOP COVER

18"-125/150# ANSI DRILLED PLATE FLANGE BOLT HOLES STRADDLE C.L. (TYP INLET AND OUTLET)

This document contains CONFIDENTIAL and PROPRIETARY information of United Filter and its subsidiaries. It is to be used for the specific application and purpose intended. Any other use without the express written consent of Universal Silencer is PROHIBITED.



DIMENSIONAL DRAWING NO. 34-A18-AAP

PRO/E

FILTER ELEMENTS INCLUDED (APPLIED ONLY TO ORDER FOR WHICH DRAWING IS CERTIFIED)

DIMENSIONS CERTIFIED FOR:

	SINGLE STAGE	DUAL STAGE		P.O. NO:
		PRE-FILTER	FINAL FILTER	
CC-16P (PAPER) 81-1164	I			BY:
				DATE:

REV. 0	APPROX WT 510 LBS.	MATERIAL STEEL	DRAWN SER	DIMENSIONAL DRAWING NO. 34-A18-AAP	REV. 0
	FINISH 88-1085 BLUE ENAMEL		CHECK DY 04-05-04		