



# UNIVERSAL SILENCER

P.O. Box 411, Stoughton, Wisconsin 53589  
608-873-4272 Fax 608-873-4298

## STANDARD FSH-30-24 AIR INTAKE FILTER SILENCER

DATE 12-22-08

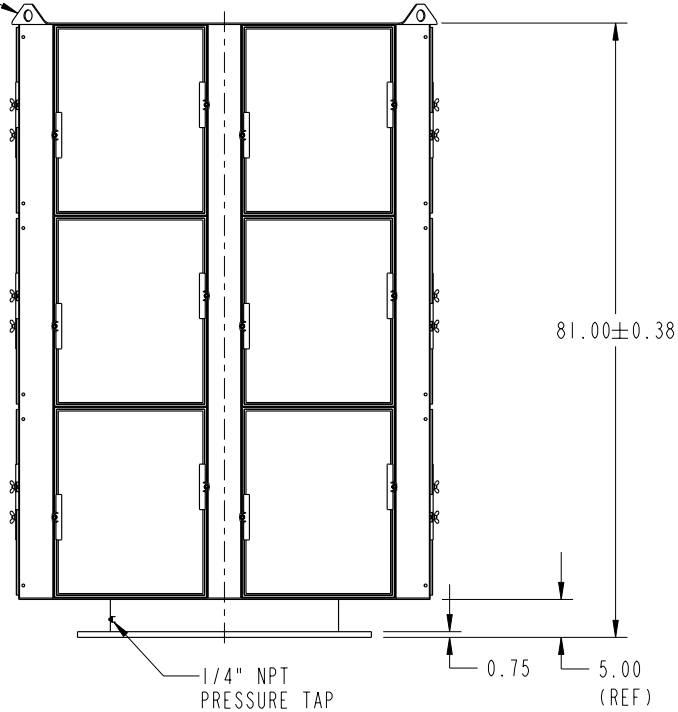
SHEET 1 OF 1

SCALE 0.040"=1"

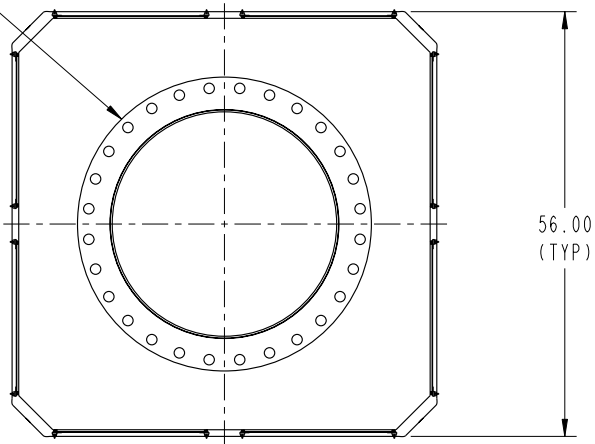
NO.	1
REVISION	UPDATED PART AND DRAWING.
DRAWN	JR 12-22-08
APP'D	JSM 12-30-08

This document contains CONFIDENTIAL and PROPRIETARY information of Universal Silencer. Any disclosure or unauthorized use without the express written consent of Universal Silencer is PROHIBITED.

(4) LIFT LUGS WITH  
Ø 1.50 HOLES



30"-125/150# ANSI  
DRILLED PLATE FLANGE,  
BOLT HOLES STRADDLE C.L.  
(TYP INLET & OUTLET)



NOTES:

1. WEIGHT SHOWN DOES NOT INCLUDE THE WEIGHT OF FILTER ELEMENTS.



DIMENSIONAL DRAWING NO.  
37-530-AA

FILTER ELEMENTS INCLUDED (APPLIED ONLY TO ORDER FOR WHICH DRAWING IS CERTIFIED)				MOUNTING LEGS YES <input type="checkbox"/> NO <input type="checkbox"/>		DIMENSIONS CERTIFIED FOR:	
FILTER TYPE AND PART NUMBER	SINGLE STAGE	DUAL STAGE		X DIM= _____ Y DIM= _____ X+Y DIM= _____	P.O. NO: _____		
		PRE-FILTER	FINAL FILTER		U.S. S.O. NO: _____		
					BY _____		
					DATE _____		

APPROX WT	1260 LBS	MATERIAL	STEEL	DRAWN	JR	DIMENSIONAL DRAWING NO.	REV.
FINISH	88-0116 BLUE ENAMEL	CHECK	JSM 12-30-08	37-530-AAN		1	