

Space Saver units are designed for side-in end-out mounting, although either end may be used as an inlet. Using end-in side-out may result in lower attenuation reductions. Condensate drains standard on all units.

Space Saver Engine Exhaust Silencers

4

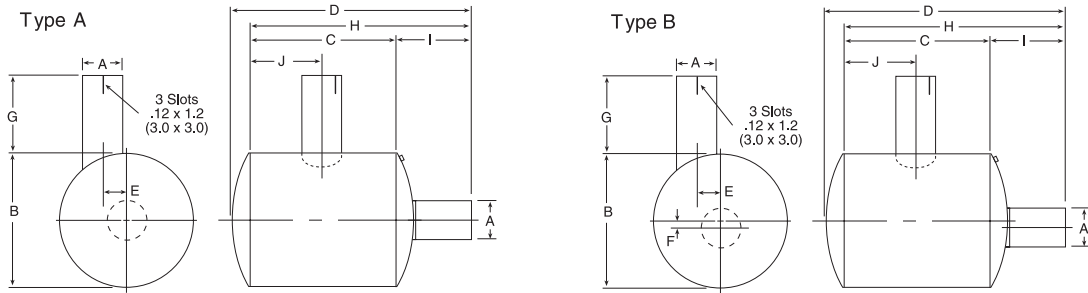
3

2

1

See page 1.1 for ordering information | www.universalsilencer.com

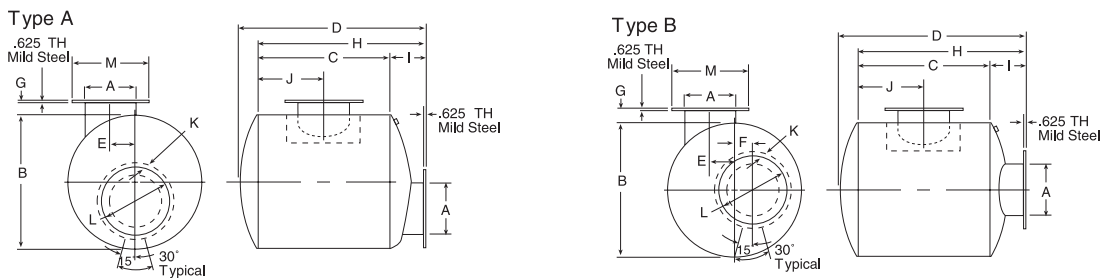
Slotted Connections



Part Number	A Inlet-Outlet Diameter	B Outside Body Diameter	C Body Length	D Overall Length	E Inlet Offset to C/L	F Outlet Offset to C/L	G Inlet Length	H Length to Flange	I Flange to Flange	J Offset Seam to Inlet C/L
47820S	2.0	7.00	8.0	12.70	1.10	—	4.0	12.0	4.0	4.0
47825S	2.5	8.50	8.5	13.33	1.60	—	4.0	12.5	4.0	4.3
47830S	3.0	12.11	9.3	14.65	—	—	4.0	13.1	3.9	4.6
47835S	3.5	12.11	12.0	19.42	2.70	—	4.0	18.0	6.0	6.0
47840S	4.0	12.11	16.0	23.32	2.40	—	4.0	21.9	5.9	8.0
47850S	5.0	16.11	16.5	23.89	3.70	—	4.0	22.4	5.9	8.2
47860S*	6.0	16.11	22.0	29.49	2.50	1.5	4.0	28.0	6.0	11.0

*Refer to configuration B.

Flanged Connections



Part Number	A Inlet-Outlet Diameter	B Outside Body Diameter	C Body Length	D Overall Length	E Inlet Offset to C/L	F Outlet Offset to C/L	G Inlet Length	H Length to Flange	I Flange to Flange	J Offset Seam to Inlet C/L	K Mounting Flange Bolt	L Bolt Hole Diameter	M Mounting Flange Diameter
47840F	4.0	12.11	16.0	23.32	2.40	—	4.0	21.9	5.9	8.0	0.750	7.50	9.0
47850F	5.0	16.11	16.5	23.89	3.70	—	4.0	22.4	5.9	8.3	0.875	8.50	10.0
47860F	6.0	16.11	22.0	29.49	2.50	1.5	4.0	28.0	6.0	11.0	0.875	9.50	11.0
47880F	8.0	22.15	25.0	36.28	4.50	3.4	4.0	33.0	8.0	12.5	0.875	11.75	13.5
47882F	10.0	26.15	30.0	41.87	4.42	4.0	4.0	38.0	8.0	15.0	1.000	14.25	16.0
47884F*	12.0	30.21	36.0	48.41	3.58	3.5	4.0	44.0	8.0	18.0	1.000	17.00	19.0
47886F*	14.0	36.21	36.0	51.29	6.50	5.0	4.0	46.0	10.0	18.0	1.125	18.78	21.0

*Refer to configuration B.